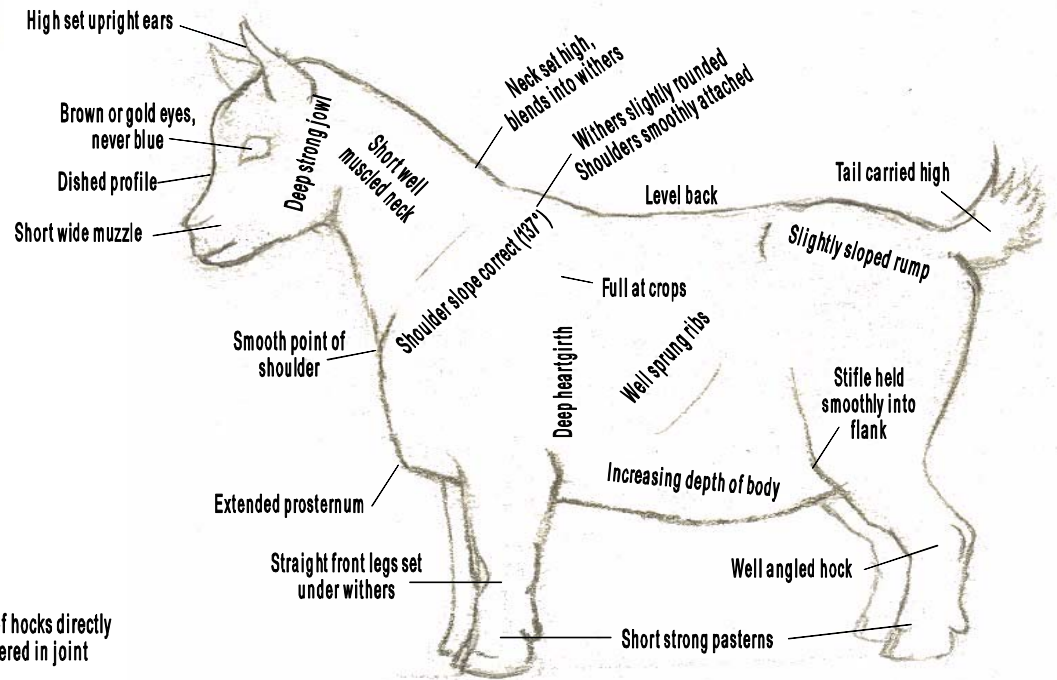
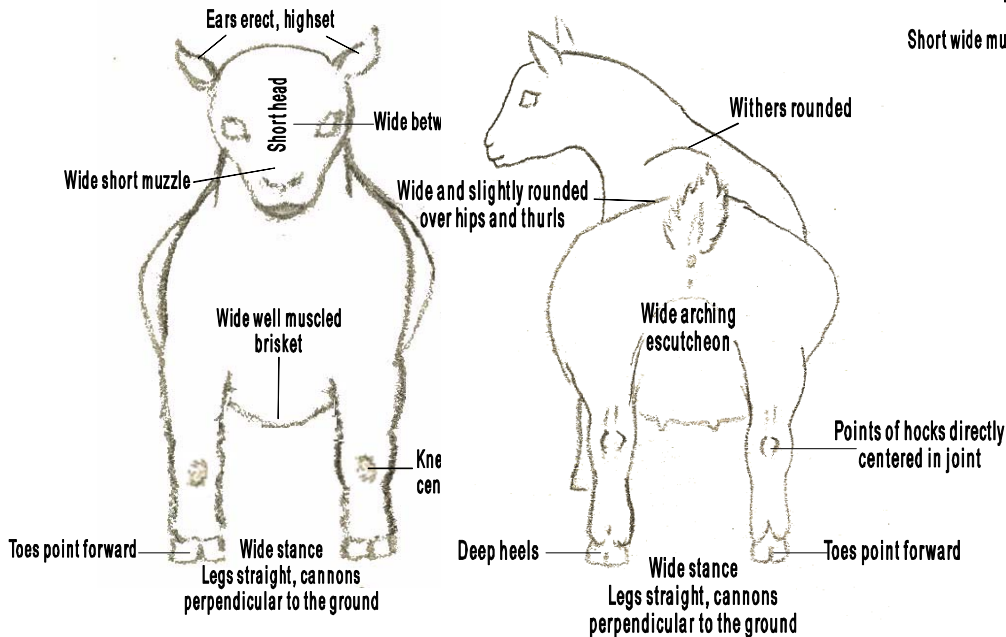


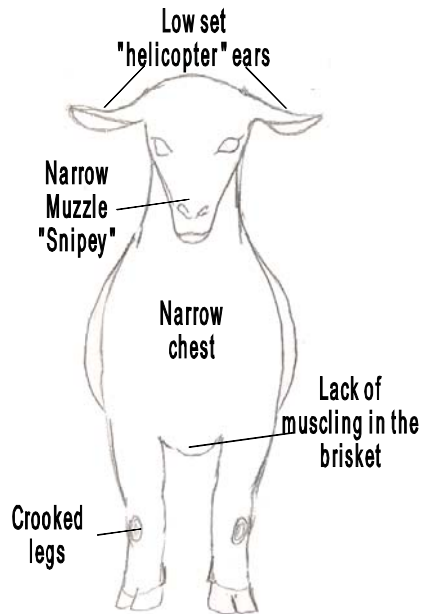
## You Be The Judge The Ideal Pygmy Goat

The NPGA Breed Standard details the traits of the Ideal Pygmy Goat. Bucks and does are judged using the Breed Standard with points given for the correctness of each trait. Wethers, castrated males, have most of these traits judged too but are also awarded 1/4 of their score for their good behavior. Pygmies came in 4 color patterns, caramel, agouti, black and solid black. The Breed Standard describes the proper markings for each pattern. Pygmies are shown in their full coat. Does have short hair, bucks have long flowing beards and capes, long hair down their backs and on their upper legs. Pygmies are genetic dwarves; they have short legs, short necks, stout round barrels, and are compact and cobby, being slightly longer than they are tall. Pygmy goats are heavily muscled and heavy boned, standing on stout legs. Pygmies walk smoothly and fluidly, the legs moving well forward on each stride with the rear foot falling nearly in the hoof print left by the forefoot. The stride is wide, the legs moving perpendicular to the ground. The legs do not paddle outward nor swing inward; the feet do not drag. The head is carried alertly above the withers.

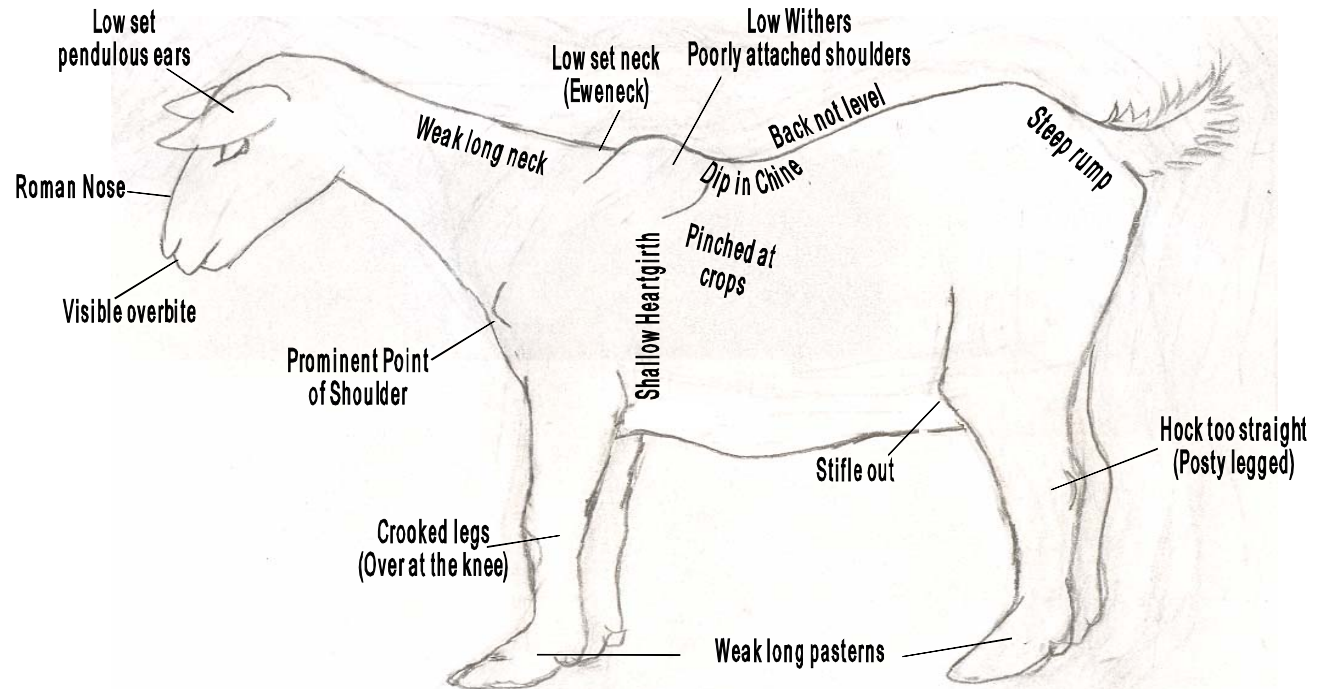


Cobby, length of body is nearly the same as height at withers. Overall heavy boned and heavy muscled. Head carried above withers. An overall alert animated appearance.

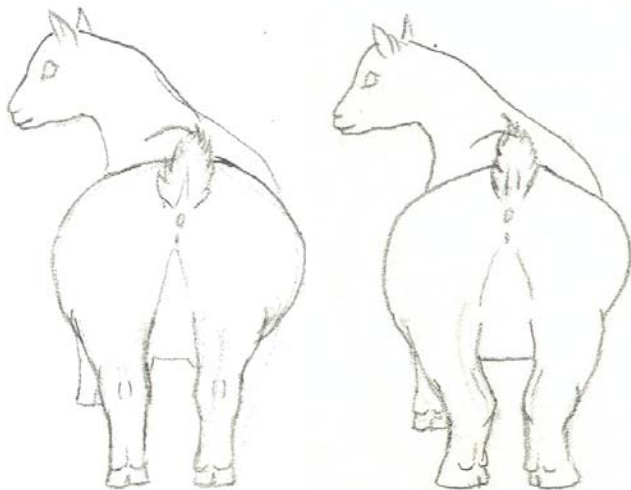
## You Be The Judge Pygmy Goat Faults



This goat is knock-kneed and the toes point outward indicating the entire leg is somewhat twisted. Some dairy goat judges refer to this as "curly" front legs.



Lack of overall body capacity. There is no extension of the prosternum, heartgirth is shallow, no increasing depth going toward the flank. Lack of overall muscling, light boned.



The goat on the left has straight legs but has a narrow leg set. This is fairly common in pygmies. The goat on the right has crooked rear legs, she is cow hocked and narrow. The hocks point in, the toes point out.

### Disqualifying Traits

Disqualifying traits are those that prohibit a goat from being shown. These are:

- A disfiguring malocclusion is a misaligned bite or crooked jaw that can be seen without opening the lips.
- Traits that challenge the breed identity such as a Roman nose, pendulous ears, blue eyes, a complete lack of breed markings, wavy or curly coat, or being genetically hornless (naturally polled) are disqualifying.
- Goats that are very thin are disqualified.
- The teats are checked. Bucks must have perfect but non-functioning teats, does are allowed some minor flaws, but fishtail teats and teats with multiple orifices will disqualify a doe.
- A buck's testicles are checked; they must have 2 fully descended normal testes.